



Installation Guidelines



Capture



Edit



Annotate



Compile



Deliver

Proprietary Rights

© 2012 Qarbon.com, Inc. All rights reserved • 112011

The information contained in this manual is subject to change at any time and without prior notice. No part of this manual may be reproduced or transmitted in any form or by any means for any purpose without prior written permission of Qarbon.

Qarbon assumes no responsibility for errors or omissions or inadvertent damages that may result from the use of the content in this manual or from the use of any applications, programs or source code associated with it.

The trademarks, logos, and service marks ("Marks") are the property of Qarbon.com, Inc. or other third parties. You are not permitted to use the Marks without the prior written consent of Qarbon.com, Inc. or such third party that may own the Marks. Qarbon, Qarbon.com, Inc. and the Qarbon.com, Inc. logo, Viewlet, ViewletBuilder, ViewletACE, ViewletQuiz, ViewletCam, ViewletPoll, and ViewletCentral are trademarks of Qarbon.com, Inc. Incorporated. All other product and company names and logos are trademarks or registered trademarks of their respective holders.

For more information about these Proprietary Rights and other legal matters with regards to Qarbon products, services and related electronic assets and documentation, please visit our web site at: www.qarbon.com/about_us/legal/

Published by:
Qarbon.com, Inc.
www.Qarbon.com

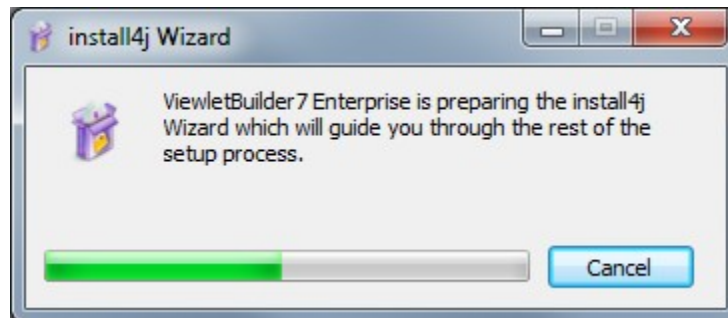


Installing on Windows

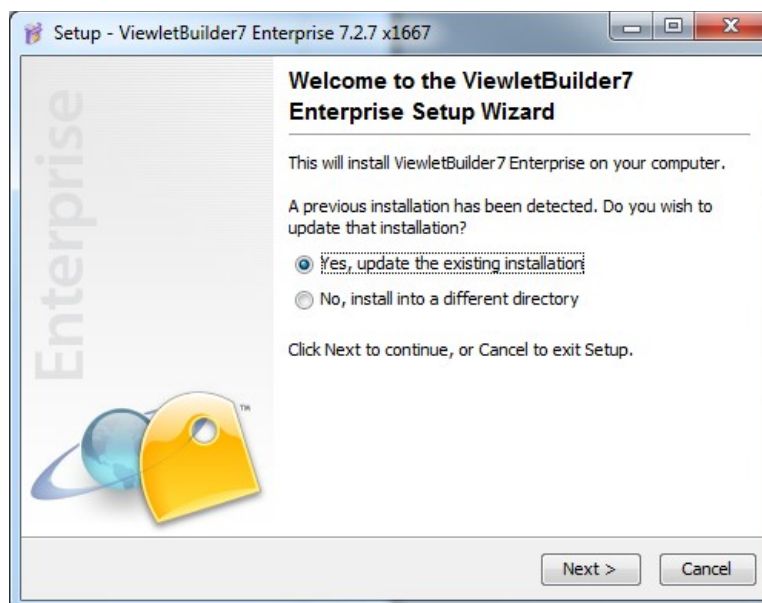
Step 1: Double click on the installer icon to start the installaton.



Step 2: Wait while the progress dialog completes:

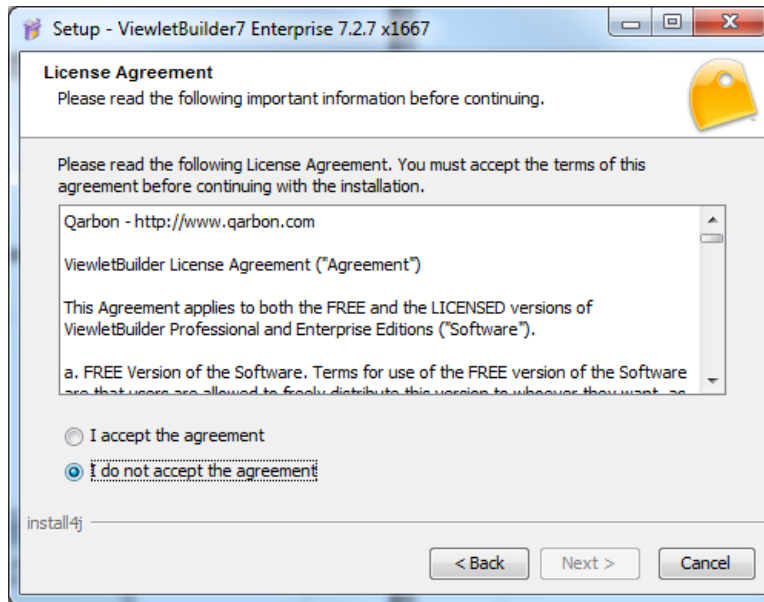


Step 3: Select either to update your current installation or install into a different directory.



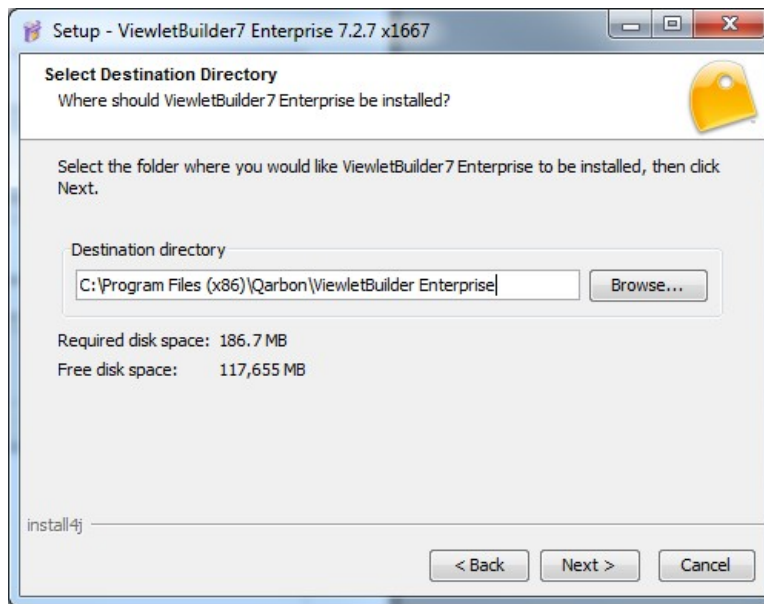
You can have multiple version of ViewletBuilder or ViewletQuiz installed in differnet directories if you prefer.

Step 4: Accept the License Agreement



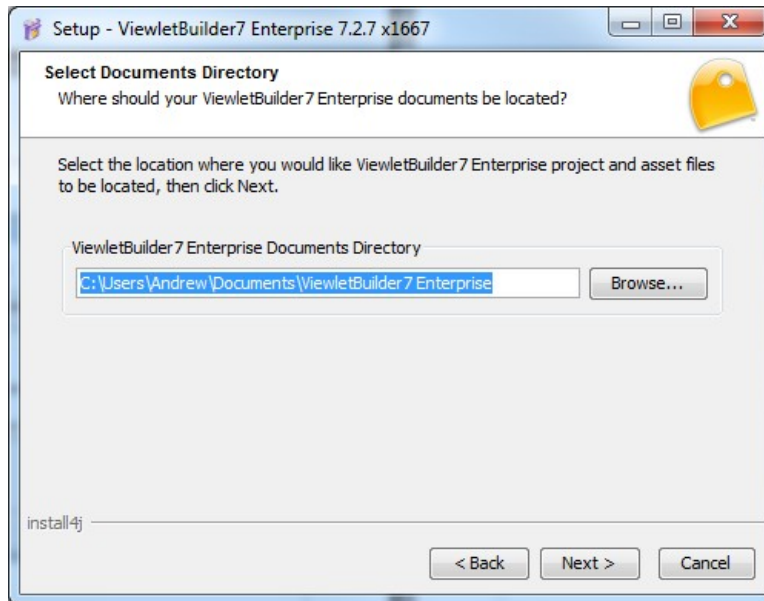
Step 5: Select the Installation Directory

This is the directory where the ViewletBuilder or ViewletQuiz program files will be stored.



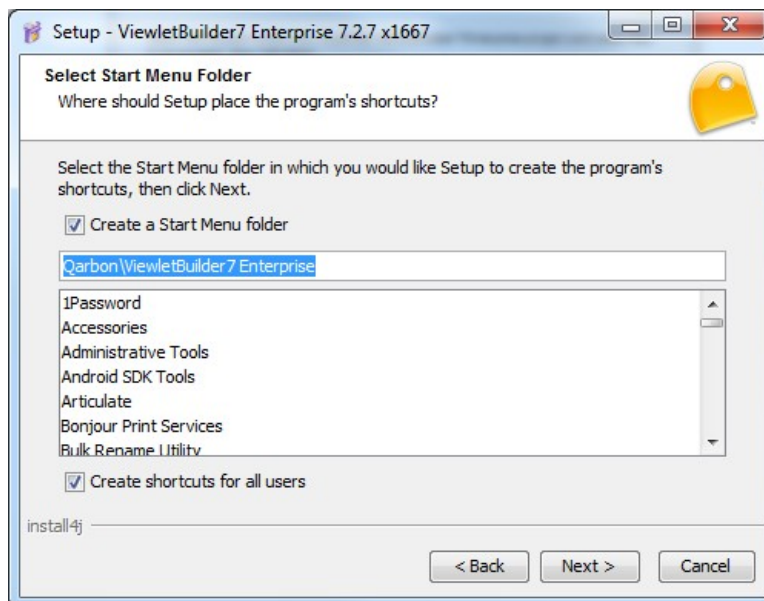
Step 6: Select the ViewletBuilder or ViewletQuiz documents directory. The documents directory is the place where ViewletBuilder or ViewletQuiz will store project files as well as library files, such as Stylesheets, HtmlFrame or other resources you modify while working on your projects.

You must have full read and write access to this directory.



You can modify the location of this directory after installation via ViewletBuilder or ViewletQuiz Preferences.

Step 7: Select the Start Menu Folder

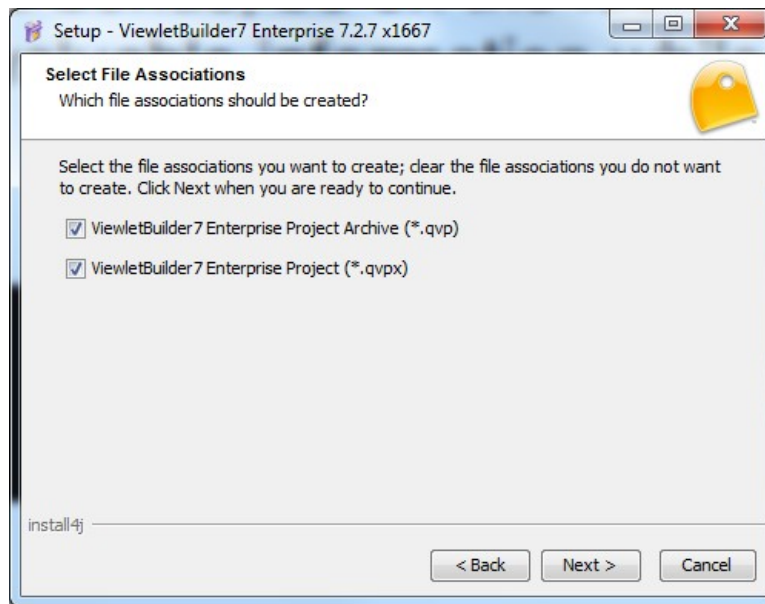


Step 8 – Setup file associations

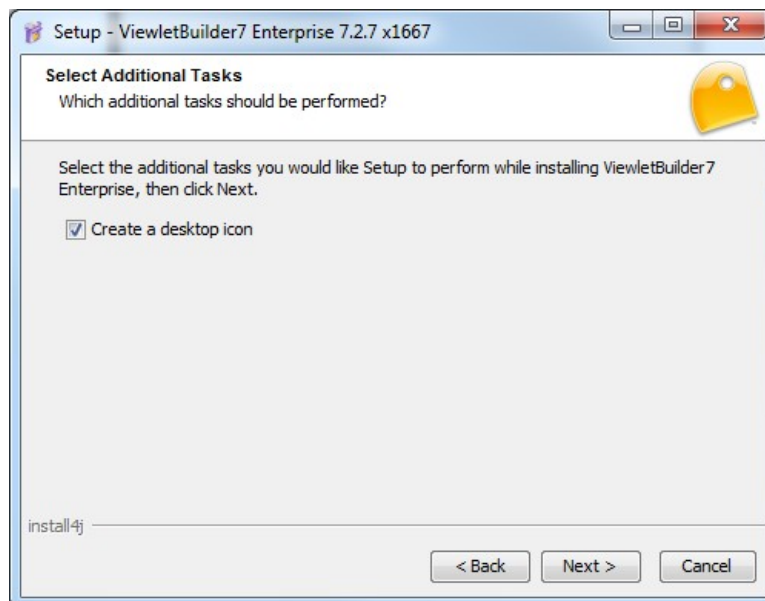
ViewletBuilder will register the file extensions QVPX and QVP
ViewletQuiz will register the file extensions VIEX and VIP

QVPX and VIEX are the project file formats.

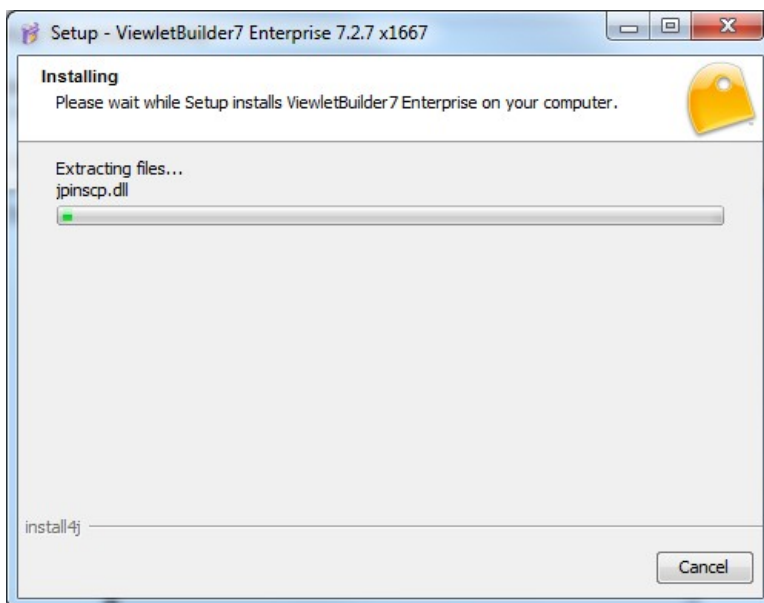
QVP and VIP are archive formats. They take the QVPX or VIEX and compress it along with all its resources. This allows you to more easily share your projects



Step 9 – Create a Desktop Icon – You can optionally choose to install an icon to your desktop.



Step 10 – Wait while the install completes.



Step 11- Complete the Installation

